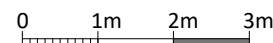
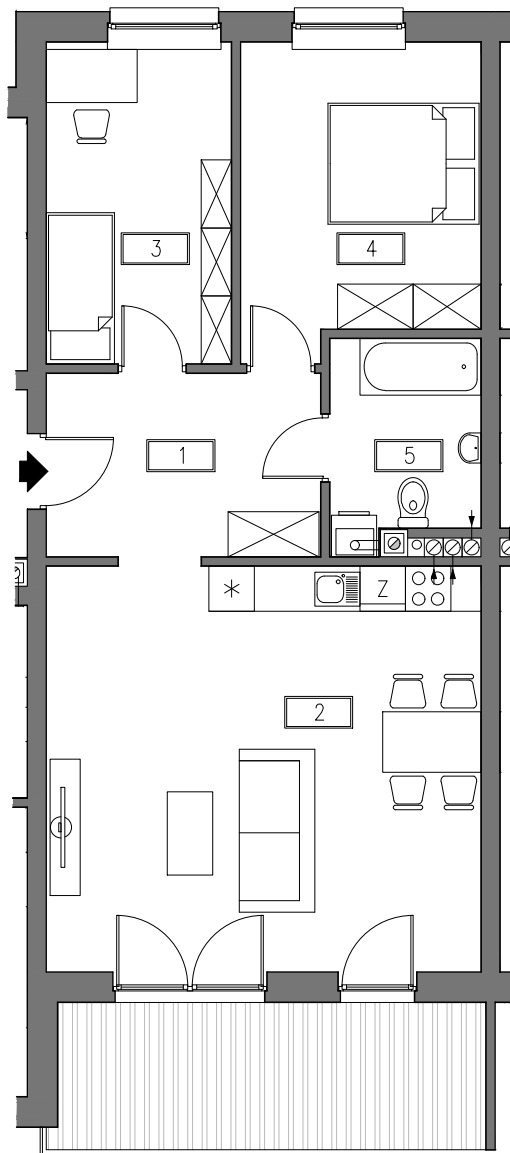


# BUDYNEK WIELORODZINNY CHORZÓW UL.3-GO MAJA

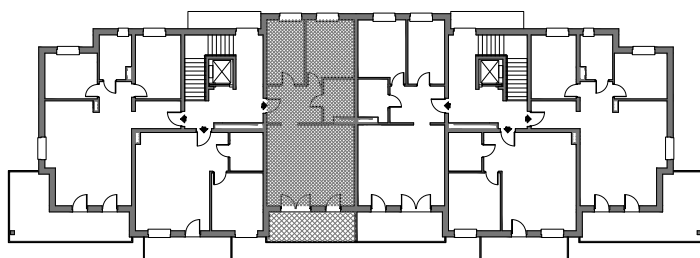


MIESZKANIE A12

III PIĘTRO



Schemat kondygnacji:



Powierzchnia użytkowa:

|                               |                      |
|-------------------------------|----------------------|
| 1 - Przedpokój                | 5,55 m <sup>2</sup>  |
| 2 - Salon z aneksem kuchennym | 42,39 m <sup>2</sup> |
| 3 - Pokój                     | 10,54 m <sup>2</sup> |
| 4 - Sypialnia                 | 12,69 m <sup>2</sup> |
| 5 - Łazienka                  | 6,03 m <sup>2</sup>  |

|                |                            |
|----------------|----------------------------|
| <b>Razem</b>   | <b>67,98 m<sup>2</sup></b> |
| <b>Balkon</b>  | <b>11,09 m<sup>2</sup></b> |
| <b>Komórka</b> | <b>4,67 m<sup>2</sup></b>  |